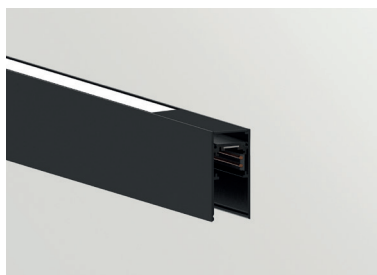


TRACK 48V + INDIRECT LIGHT

ARKOSLIGHT

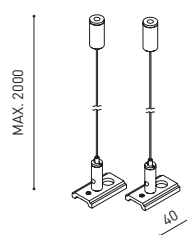
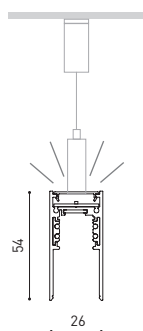


		P	CCT	Flux	LOR	L
TRACK 48V + IND. LIGHT 1400	A466-01-20- NT WT	18,3W	2700K	2320lm	70%	1402mm
	A466-01-21- WT NT	18,3W	3000K	2380lm	70%	1402mm
	A466-01-22- WT NT	18,3W	4000K	2585lm	70%	1402mm
TRACK 48V + IND. LIGHT 2800	A466-02-20- WT NT	39,2W	2700K	5210lm	70%	2802mm
	A466-02-21- WT NT	39,2W	3000K	5360lm	70%	2802mm
	A466-02-22- WT NT	39,2W	4000K	5820lm	70%	2802mm

48 V |  IP20 | CRI>90 | L90B5
>50.000 h

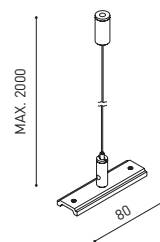


TRACK 48V + INDIRECT LIGHT
1400 / 2800



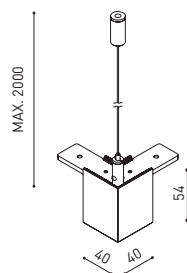
Indirect Light Suspension kit 48V (2 units)

A466-00-03- | NT | WT |



Suspension straight joiner kit 48V

A466-00-04- | NT | WT |



Suspension 90° Corner joiner kit 48V

A466-00-05- | NT | WT |



*Electrical connection not included.

DROP VOLTAGE TABLE

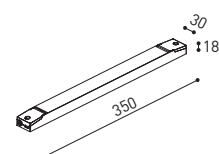
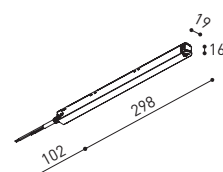
POWER (W)	CABLE SECTION (mm²)	CABLE LENGTH (m)				TRACK LENGTH (m)			
		5	10	20	30	50	50	X	X
100	0,75	50	50	X	X	50	50	40	25
	1,5	50	50	40	25	50	50	40	25
150	0,75	40	15	X	X	50	40	20	X
	1,5	50	40	20	X	50	40	20	X

For calculations, you must consider indirect light power.

		P	V	D (A x B x C)
Constant Voltage LED POWER SUPPLY	0434-01-61* N	100W	48V	298 x 19 x 16mm
	0434-01-62	150W	48V	350 x 30 x 18mm

220
240 V~

*To be installed inside the track.



COLOUR | NT ■ | N ■ | WT □ |

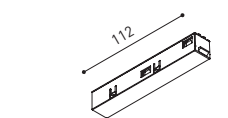
MATERIAL |  AL |  PC |

Calle N · Pol. Ind. EL OLIVERAL
46394 Ribarroja del Turia · Valencia (Spain)
Tel. +34 961 667 207 · Fax +34 961 667 054
info@arkoslight.com · www.arkoslight.com

5Year
GUARANTEE

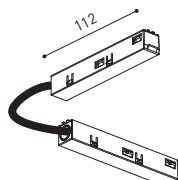
TRACK 48V + INDIRECT LIGHT

ARKOSLIGHT



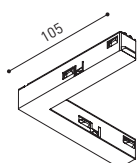
Live-End Connector 48V

A338-00-01- | N | W |



L-JOINT Connector 48V

A338-00-12- | N | W |



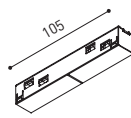
Corner 90° Connector One Plane 48V

A338-00-24- | N | W |



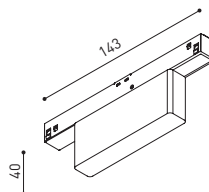
End 48V

A338-00-06- | NT | WT |



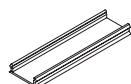
Central Connector 48V

A338-00-02- | N | W |



Wireless Control 48V

0434-01-31- | N | W | Casambi/AAG Stucchi App



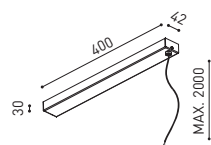
Cover Gap 1m 48V

A338-00-30- | N | W |



End Feed 48V

A338-00-07- | NT | WT |

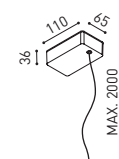


Wired Power Supply Case 48V

A338-00-25- | NT | WT | 150W NO DIM

A338-00-26- | NT | WT | 150W DIM

220 V~
240
INCL



Suspension Feed Kit

A338-00-16- | N | W | NO DIM

A338-00-17- | N | W | DIM

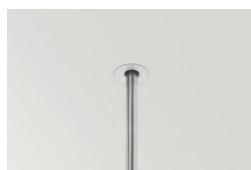
For remote power supply

A338-00-27- | N | W | NO DIM

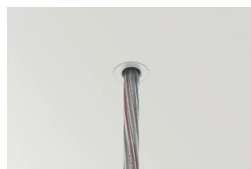
A338-00-28- | N | W | DIM

For power supply inside the track

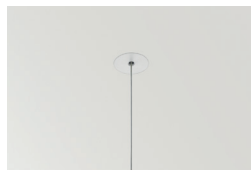
MAINS TRIMLESS



MAINS THICK TRIMLESS



STEEL CABLE TRIMLESS



WIRE TRIMLESS ACCESSORIES

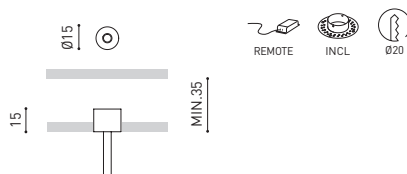
FEED

Mains Trimless*

A023-00-01- | W | N | NO DIM

Mains Thick Trimless*

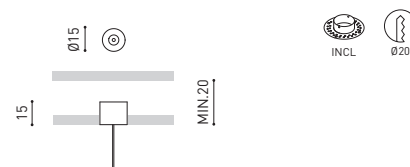
A023-00-02- | W | N | DIM



FASTENING

Steel Cable Trimless*

A023-00-05- | W | N |



COLOUR | WT ☐ | NT ☒ | W ☐ | N ☒ | MATERIAL | ☐ AL | ☒ PC | * AS MANY PIECES AS NEEDED ACCORDING TO YOUR PRODUCT